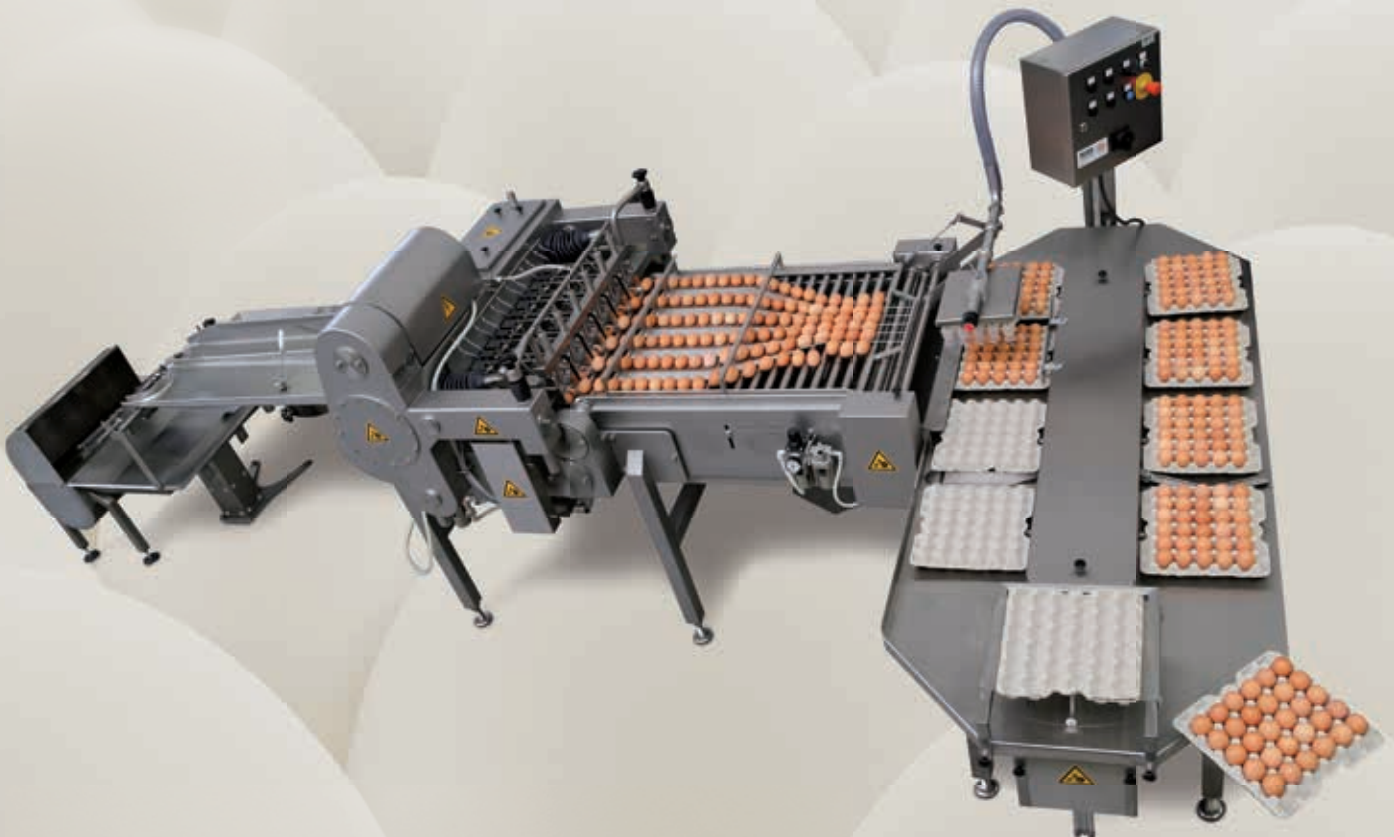


MOBA

GRADING - PACKING - PROCESSING

CEB

| 108 | 216 | 432 |



PROFIT STARTS WITH CARE

www.moba.net

Suitable for both pulp and plastic trays



Introduction

Coenraads egg breaking machines have been renowned for more than 40 years for their sound construction, reliability and virtually maintenance-free operation. Their straightforward construction provides years of trouble-free production.

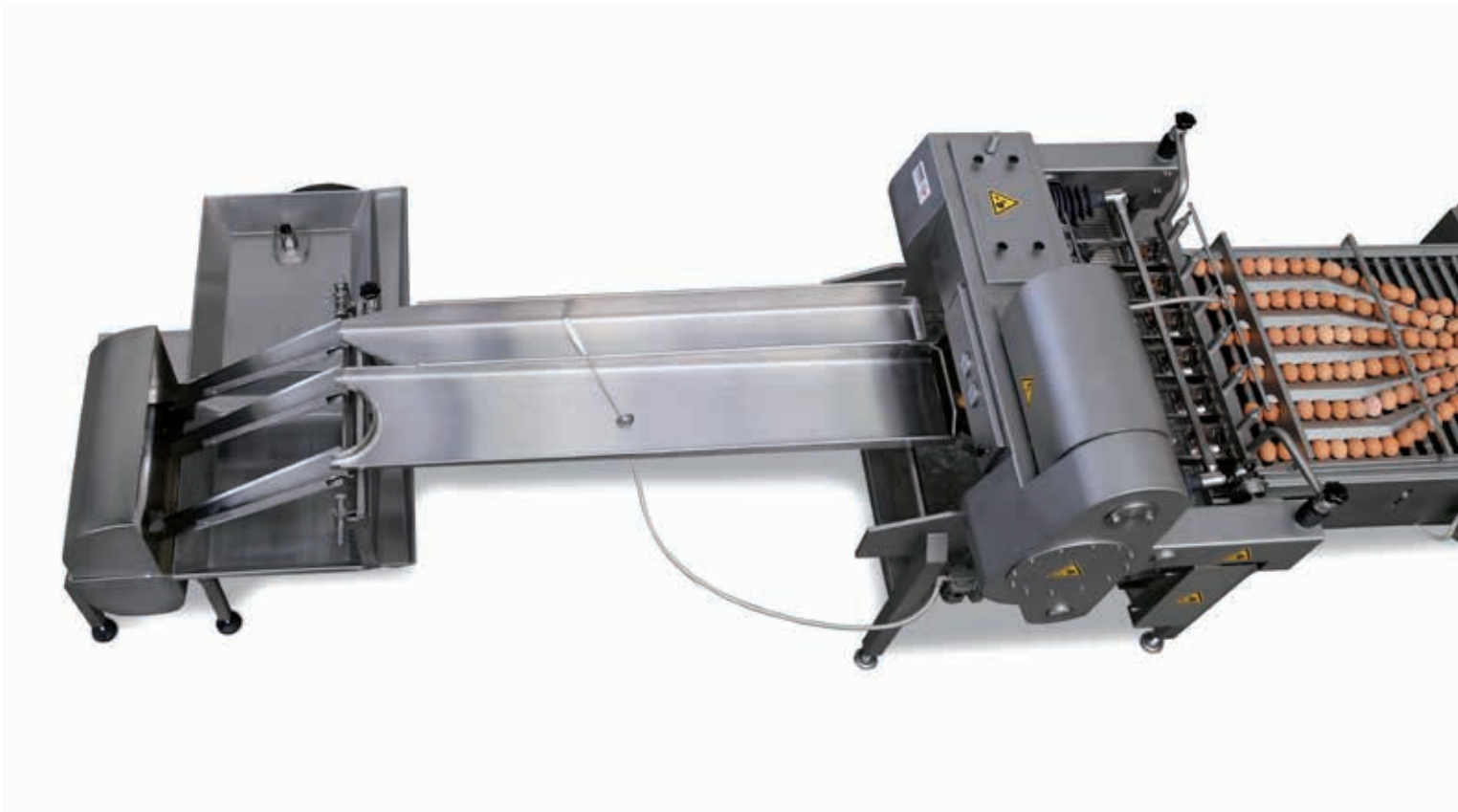
The most important features of Moba-Coenraads CEB egg breakers are:

- The machine breaks every egg: The unique pneumatic cracker design holds every egg to be broken in position at exactly the right pressure, irrespective of its size or the condition of the shell. All eggs are broken, even very small or large eggs and cracked or weak eggs.
- Separation capability: Adding a simple, flexible separation chute upgrades the standard whole-egg breaking system to a separation breaker in no time at all.
- Sustainable: very low power and compressed air consumption
- Straightforward: Reliable and robust construction, requires very little maintenance. Needs less frequent adjustment than most other machines on the market.
- Reliable and economical design, with a minimum number of moving parts. Critical parts operate in a protective oil bath, which greatly reduces maintenance. Usually needs very few replacement parts.
- Hygienic: very easy to dismantle for thorough cleaning. Moreover, all machine parts are made from high-grade stainless steel.

Infeed



Loader: gentle egg loading



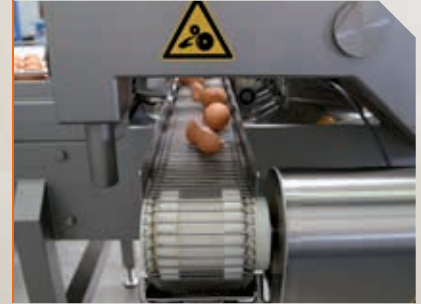
1) The egg is gently led into a cradle



2) Knives make a very clean break



3) Shell conveyor



How the machine works

A loading system is generally used to place the eggs on the infeed. This loading system can consist of a single tray loading system or a more complex destacker loading system, depending on the functionality and capacity needs. A Moba-style accumulator is available for inline production lines. The infeed conveyor's slowly-turning stainless steel rollers bring each egg to the correct position at the static crackers.

The eggs are broken pneumatically, not with conventional springs. First, an egg is gently led into a cradle. A pneumatic pusher (1) holds the egg and stops it moving upwards. The pusher automatically adjusts itself to the size of the egg. When the pusher is in position the knives are released to make a very clean cut in the eggshell. Once the knives have cracked the shell they move outwards with the cradle (2) and quickly open the egg. The empty shells are pulled onto the shell conveyor (3), and at the same time the next egg is led to the cracker unit.

Separation

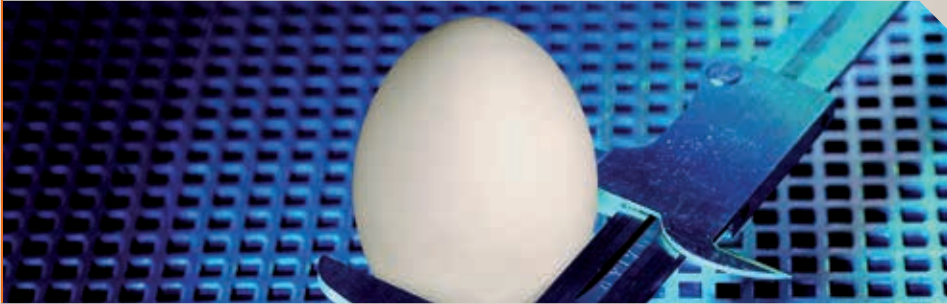
The contents of the egg are collected gently under the cracker unit and fed to a whole egg collection bin. Systems equipped with the optional separation chutes separate the yolk and albumen.

The operator can adjust the chutes very simply to the precise setting required for the viscosity of the yolk/ albumen.

On occasion, a yolk membrane tears while the egg is being broken. The operator monitors the separation process and removes any yolk fragments by hand from the product fed to the whole egg collection bin.

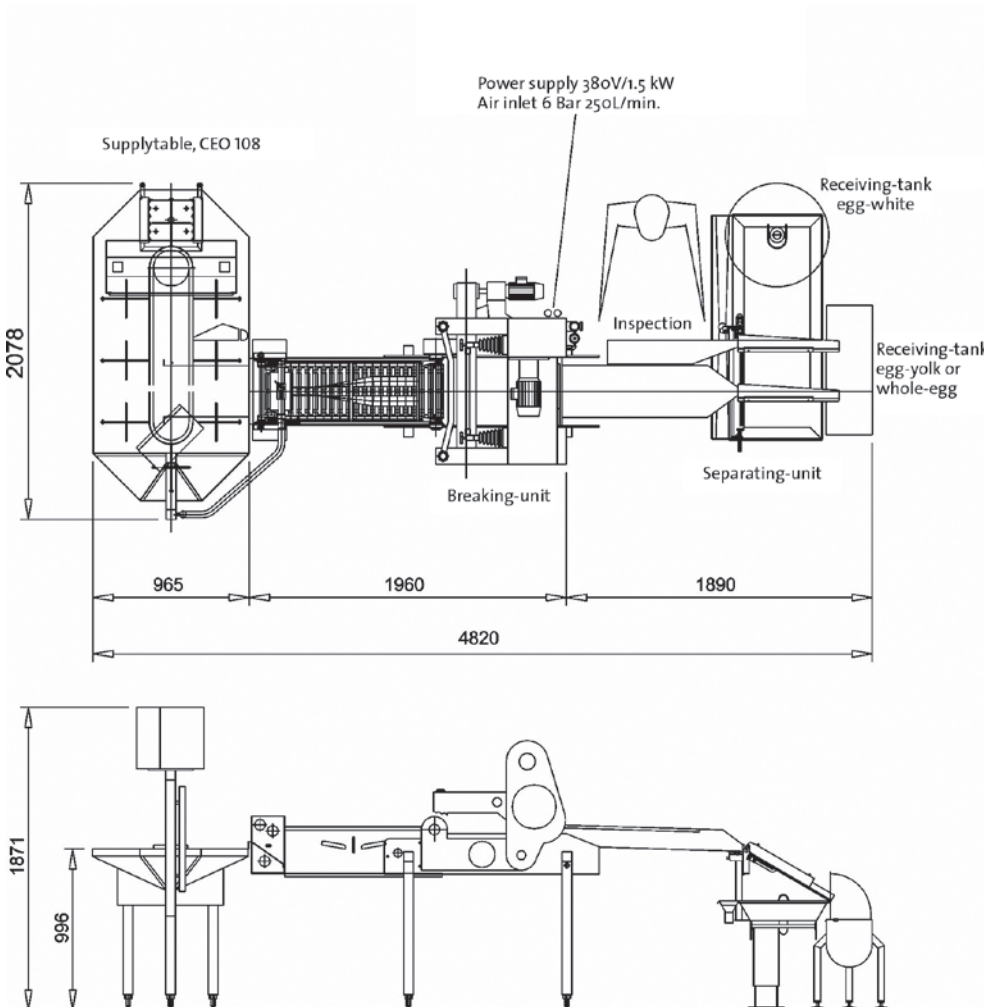
Alternatively, the CEB 432 can optionally be fitted with an optional Albumaster yolkscanner that automatically detects and rejects yolk fragments. This system uses a visual detection system to identify broken yolks. An electronically-controlled diversion valve automatically diverts broken yolks to the whole egg collection bin.

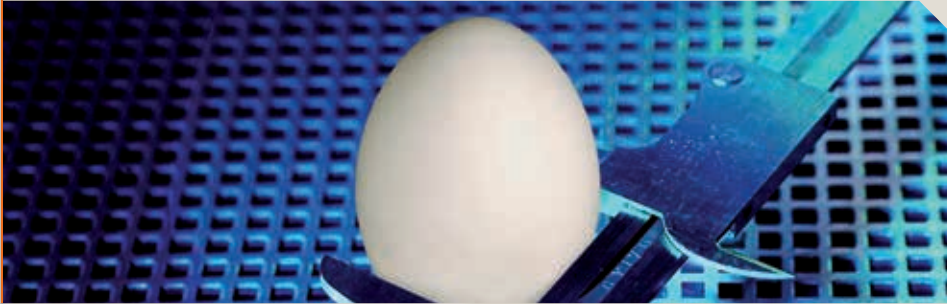




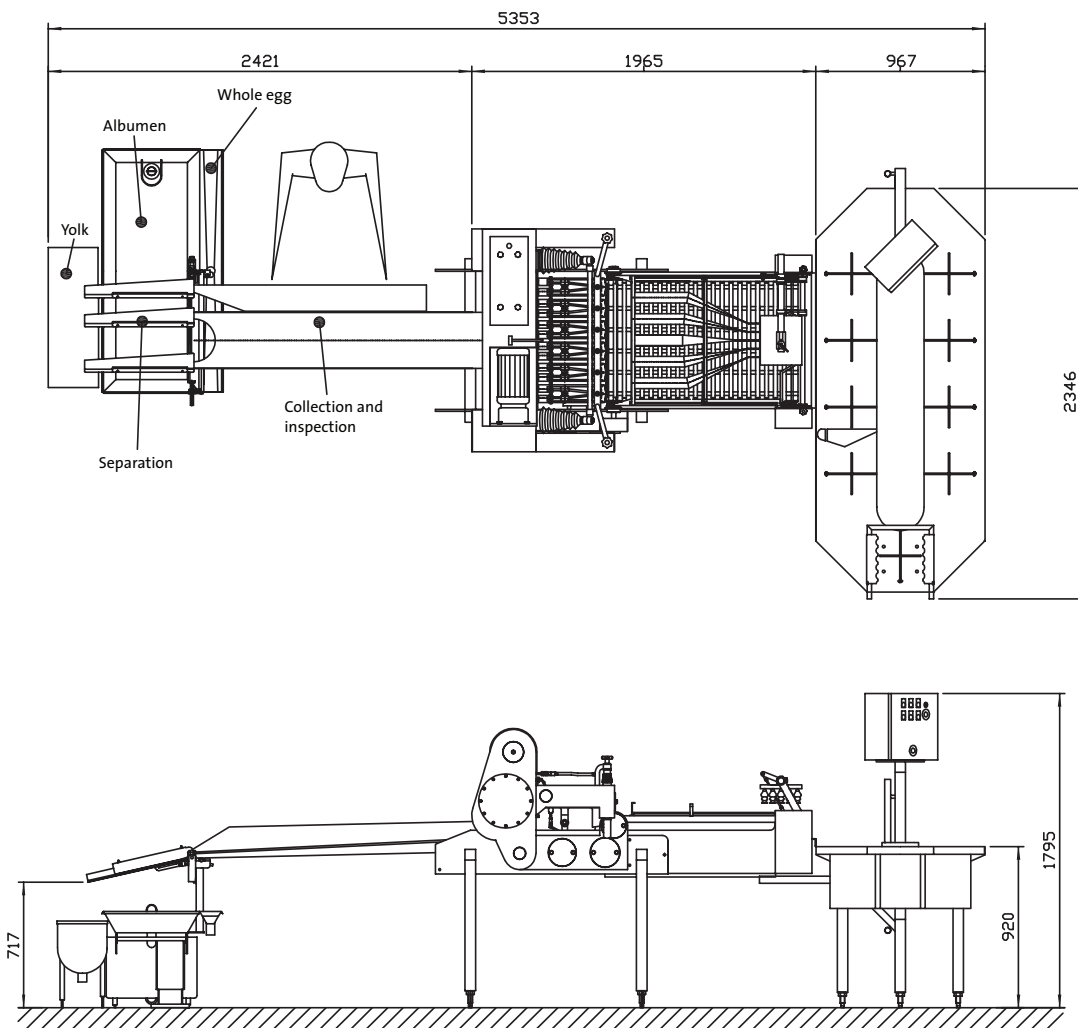
Lay-outs

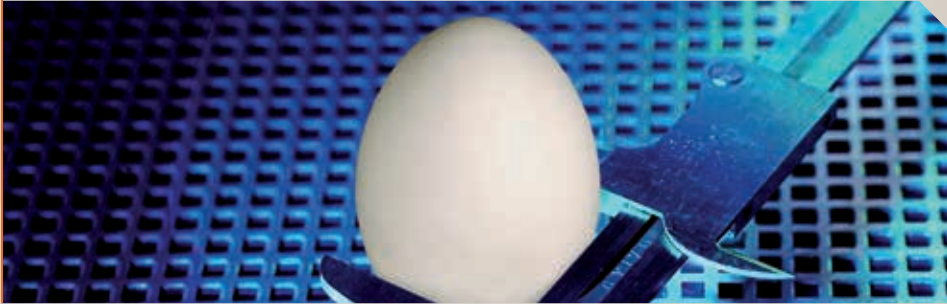
CEB 108, offline with separation system



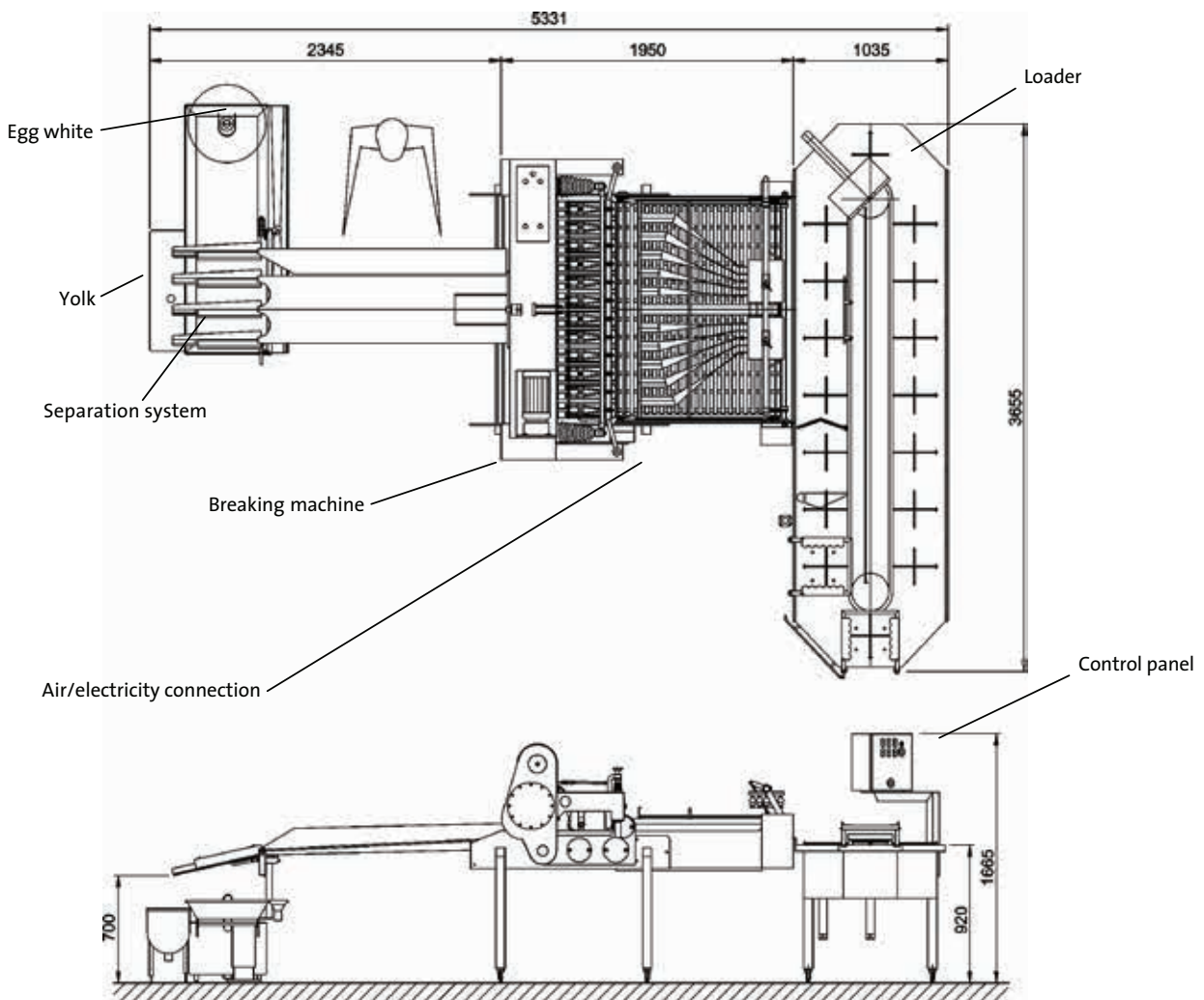


CEB 216, offline with separation system





CEB 432, offline with separation system



Moba-Coenraads egg breaking systems

	CEB 108	CEB 216	CEB 432
Capacity (cph)	30	60	120
Capacity (eph)	10.800	21.600	43.200
No. of rows	3	6	12
Single tray loader	CEO 108	CEO 216	CEO 432
Optional manual loading	Yes	Yes	No
Destacker loader	No	CAL 216	CAL 216-2
Whole egg	Yes	Yes	Yes
Optional separation	Yes	Yes	Yes
Optional Albumaster	No	No	Yes
Required air pressure	5-6 bar	5-6 bar	5-6 bar
Power consumption	1.3 kW	1.3 kW	2.16 kW



Albumaster

Information about the worldwide offices and agents' network is available at www.moba.net

PROFIT STARTS WITH CARE

www.moba.net